

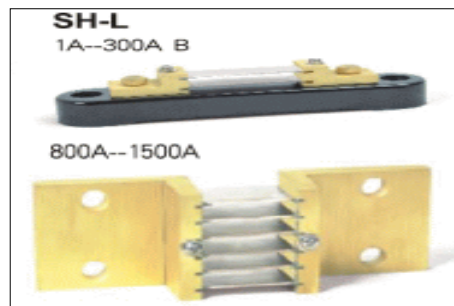
SH-L Series Shunt Resistors

USE :

The interchangeable shunts are used to multiply the measuring range of current of measuring instruments.

APPLICATION :

For Telecommunications equipment, Electric cars, Aerospace, Charging station, Electroplating Power Equipment, Instrument and meter, Dc power system, etc.



GENERAL SPECIFICATIONS

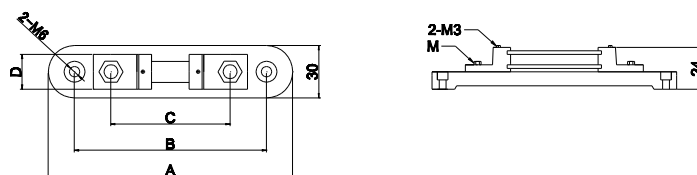
Model	Rated Current[A]	Rated Voltage[mV]	Resistance Range[mΩ]
SH-L	1~50	10~800	10~16
1A~2500A	51~2500	10~300	0.2~0.12

CHARACTERISTICS

Ambient condition	-25℃~40℃
Relative humidity	≤80%(35℃)

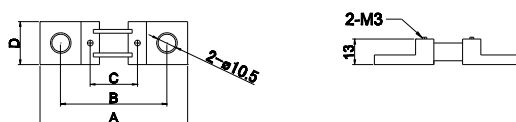
DIMENSIONS

SH-L 1A-300A B



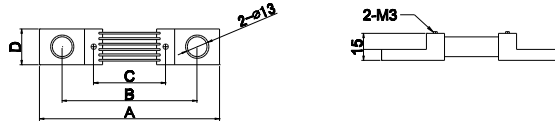
Model	Dimensions(mm)																
	25mV			50mV			60mV			75mV			100mV			Common	
	A	B	C	A	B	C	A	B	C	A	B	C	A	B	C	D	M
1A-125A																20	6
150A-200A 250A-300A	135	110	57	135	110	72	150	125	84	150	125	88	175	125	102	28	8

SH-L 100A-300A



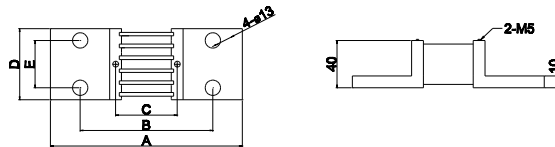
Model	Dimensions(mm)															
	25mV			50mV			60mV			75mV			100mV			Common
	A	B	C	A	B	C	A	B	C	A	B	C	A	B	C	D
100A-200A																22
250A-300A	75	54	24	89	68	38	95	74	44	103	82	52	117	96	66	28

SH-L 400A-600A



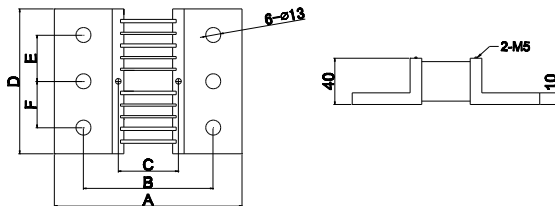
Model	Dimensions(mm)															
	25mV			50mV			60mV			75mV			100mV			Common
	A	B	C	A	B	C	A	B	C	A	B	C	A	B	C	D
400A																20
500A	87	62	22	100	75	35	105	80	40	110	85	45	126	101	61	30
600A																40

SH-L 800A-1500A



Model	Dimensions(mm)																
	25mV			50mV			60mV			75mV			100mV			Common	
	A	B	C	A	B	C	A	B	C	A	B	C	A	B	C	D	M
800A-1000A																60	40
1200A	143	93	23	157	107	37	162	112	42	170	120	50	184	134	64	80	45
1500A																100	50

SH-L 2000A-2500A



Model	Dimensions(mm)																	
	25mV			50mV			60mV			75mV			100mV			Common		
	A	B	C	A	B	C	A	B	C	A	B	C	A	B	C	D	E	F
2000A																125	40	40
2500A	143	93	23	157	107	37	162	112	42	170	120	50	184	134	64	135	45	45

ORDERING PROCEDURE EXAMPLE

